

WHAT HAPPENED TO NATURE?

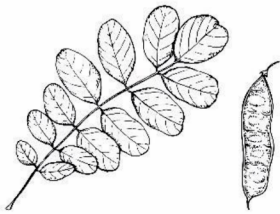
 **INDIVIDUAL WORK**

In the time of the fairies, nature flourished, there were lots of unique and magical plants, perhaps even beans that grew up to the sky! But as people occupied more and more space, the reeds and marshes along the river disappeared, and were slowly replaced by wheat fields, factories, pastures and ever growing villages and towns. Help the fairies to find the hidden traces of nature in the human world!

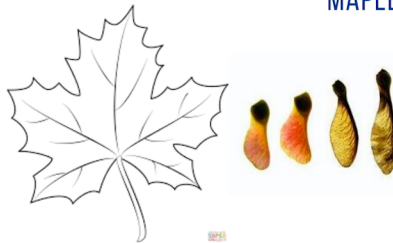


Look for trees on your walk.
Put a circle around the name of the ones you have spotted.
Write down which feature of the tree your fairy would appreciate most.

LOCUST



MAPLE



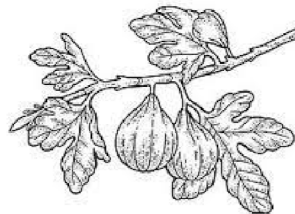
PLANE



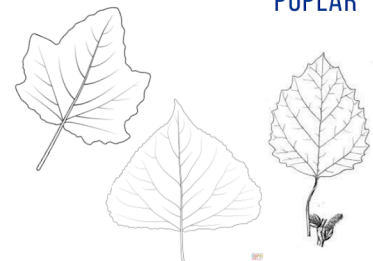
LINDEN



FIG



POPLAR



Look for a different kind of flowers and bushes too!
Draw a picture of the ones that match the words below!

SITTING

CLIMBING

BLOOMING

SPREADING

BRANCHING

HANGING

WHERE WOULD YOUR FAIRY LIVE?

 **INDIVIDUAL WORK**

The water fairies of the Danube lived on the banks of the Danube and in underwater crystal-domed palaces with golden roofs that glistened under the surface when the sun shone on them.

Which house do you think your fairies would move into? Discuss and make your own arguments!

APARTMENT BUILDING



TERRACED HOUSE



BURGHER'S HOUSE



SINGLE-FAMILY HOUSE

GUESS WHO I AM!



GROUP WORK

Solve the riddle and then share your own stories related to the thing in the answer! Tell as many fond memories as you can about the thing in the answer, so that fairies will hear them and be encouraged to return to the human world.

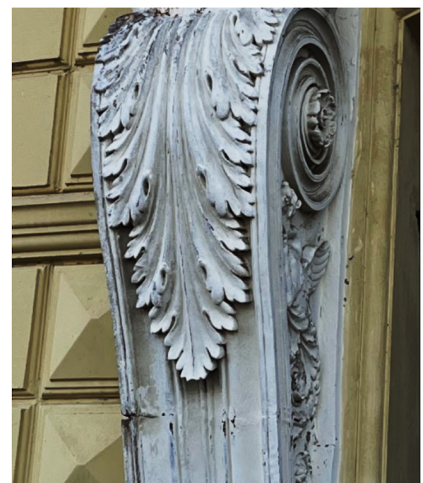
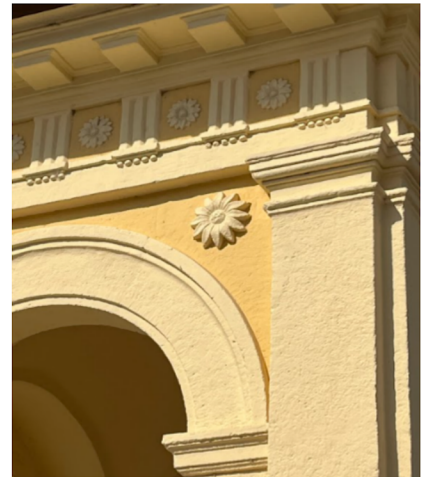
**Black Forest to Black Sea sands,
Wandering through lovely lands,
I am home to fish and frogs,
Giving life to plants and crops.
Drought may sometimes hurt me, though,
At flood you will see me grow.**

WRITE THE ANSWER HERE:

WHAT WAS IT LIKE IN THE DAYS OF THE FAIRIES?

 **INDIVIDUAL WORK**

Although the fairies left the human world more than 777 years ago, people still remember them. If you look carefully, you can discover their hidden traces (e.g. delicate plants, fairy-tale figures and creatures) on the walls of houses, on roofs and fences. Take a good look around you and find the details shown in the pictures!



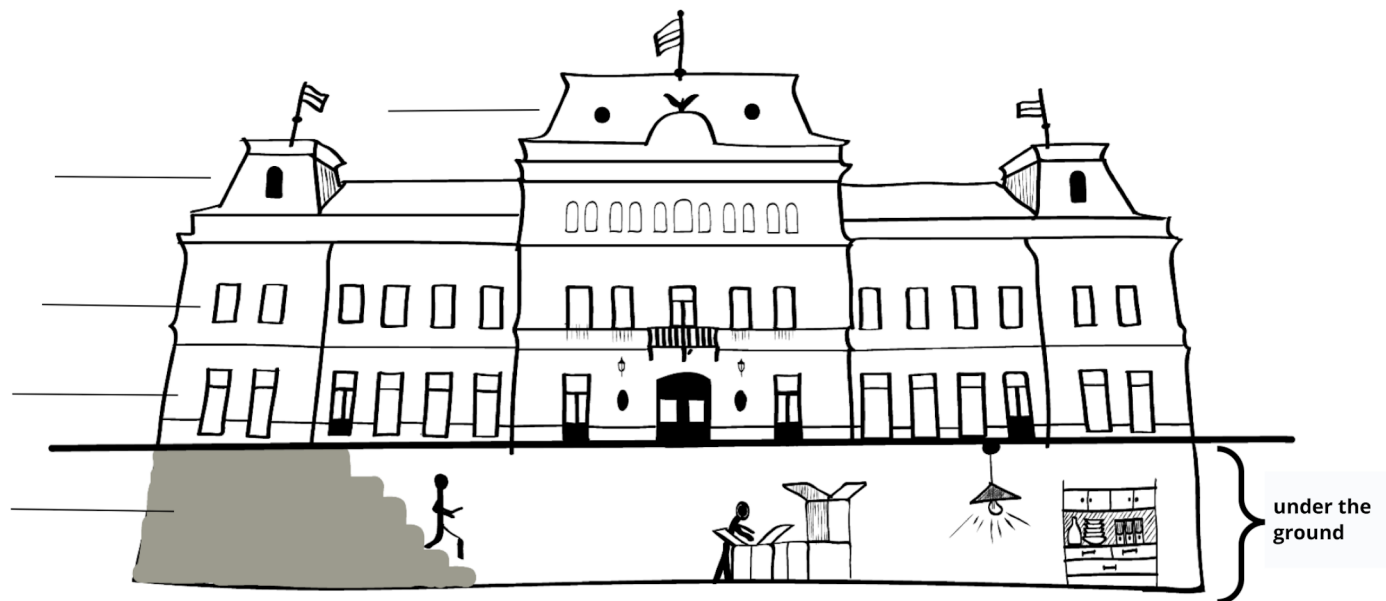
WHAT IS THIS HOUSE FOR?



GROUP WORK

The world has completely changed since the fairies moved away! Can you remember? People cut down the fairies' favourite riverside trees and straightened the winding streams so they could build houses and grow crops. The riverbed was excavated to get the gravel for the construction of the taller and taller houses of humans. Help the fairies get to know the buildings of humans!

a) Draw the patterns above the windows of the building on each floor. Describe these patterns in one word each.



b) Help the fairies find the floors of the building. Write on the line which name belongs where.

BASEMENT	GROUND FLOOR	ATTIC	FLOOR	LOFT
----------	--------------	-------	-------	------

c) Discuss what people use the different floors for (e.g.: storage, work, receiving guests, etc.).

WHY WOULD THE FAIRIES COME BACK?



GROUP WORK

After 777 years, fairies have the opportunity to return to us in the human world! So let's prepare a welcoming party for them. Form teams with your fellow fairy seekers and plan the celebration.



TASTING-FAIRY

Plan a menu together for the festive dinner!

Recall the scene from the fairy tale about the feast. Inspire yourselves with the things you have seen and collected on the walk! Which local specialities would you like to serve your fairies?

SOUP:

MAIN COURSE:

DESSERT:

DRINKS:



SEEING-FAIRY

Plan a sightseeing tour for the returning fairies!

Make a list of Baja's sights. Which places in Baja would the fairies like? Write down the names of the sights that would be on the itinerary. You may also draw!



HEARING-FAIRY

Together, compose a short melody to sing at the fairies' welcome party!

Listen to the sounds of nature, the sounds of the city! What do your fairies like or dislike? Combine the sounds and sing your melody to the fairies.



TOUCHING-FAIRY

Design and build a tiny model of the fairies' palaces!

Look around and collect materials that the fairies would use to build their palaces. Write down which materials are pleasant or unpleasant for the fairies to touch.



SMELLING-FAIRY

Create a perfume for the fairies to wear at the party!

Close your eyes and focus on your nose. What do you smell? What smells does the wind bring? What smells do the fairies like or dislike?

LIST THE INGREDIENTS OF THE PERFUME: